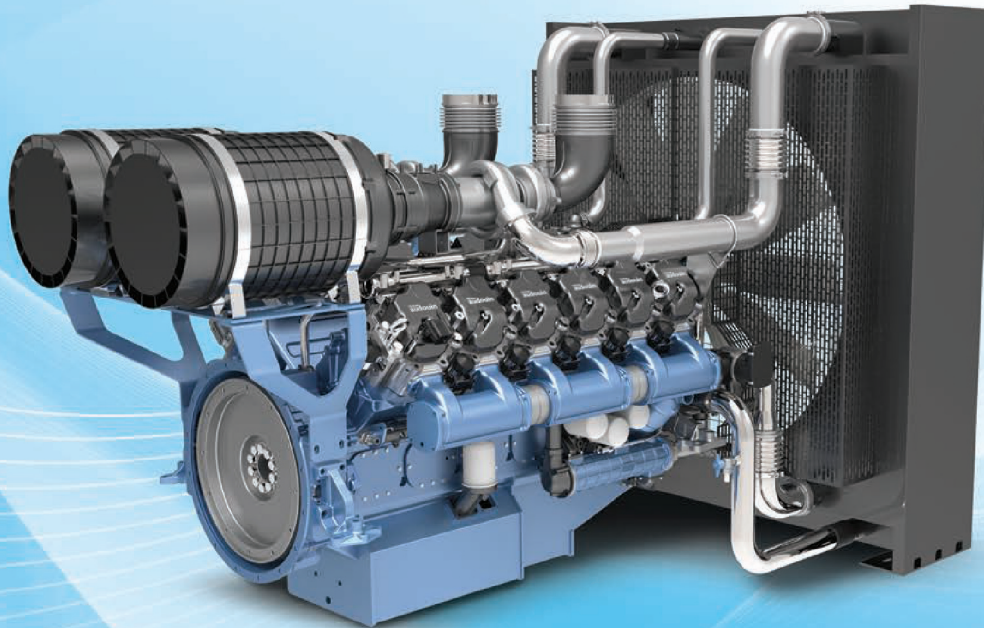


12M26 - Power Generation Application

808 kW_e, 1010 kVA



For over 100 years, Moteurs Baudouin have been manufacturing the highest quality engines for marine, power generation and a host of other applications. The continuous need to provide reliable and durable engines for land-based power generation, and the high-seas have led to BAUDOUIIN being the preferred partner by customers, successfully serving this market since 1918. The Baudouin range of G Drive engines are available from 15 kVA to 2500 kVA and are manufactured, distributed and serviced by SHIG India based at Pune, Maharashtra.

Baudouin generating sets are widely used across the sectors like commercial & residential realty, infrastructure (Airports/Metros/Roads/Bridges/Tunnels), hospitality, shopping malls, convention centre, IT/ITES & Datacentre applications..

Engine features :

- Cast iron cylinder block with rugged body construction designed to minimize vibrations and low noise level
- Hardened steel forged crankshaft with induction hardening.
- Full flow duplex type oil filters along with lube oil cooling system to maintain optimum temperature
- Cast iron dry liners, lube oil cooled aluminium alloy pistons with high performance piston rings.
- High power to weight ratio with low life cycle cost
- Air intake, exhaust manifold and turbocharger provided with shield to isolate heat
- Full flow multilevel type oil filters along with electric pump to pre-lubricate engine and reduce friction and better start-ability
- Fuel system with in-line injection pump and electronic governing
- Three level filter with integrated electric fuel pump and water separation filter

Engine basic data

Engine model	12M26D968E200
Suitable kVA rating	1010
Gross engine power (kWm) / Engine speed (rpm)	968 / 1500
Bore x stroke (mm)	150 x 150
Displacement (L)	31.8
No. of cylinders	12 - V
Aspiration	Turbocharged-Aftercooled
Compression Ratio	15.7 : 1
Performance data	
Load factor	Fuel Consumption litres/hr
75%	153.8
100%	202.7
Lubrication system	
Total lube oil capacity (L)	109
Lube oil consumption and fuel consumption ratio	<0.3%
Recommended lube oil specification	CI4+15W40
Fuel system	
Injection pump type	Mechanical
Governor method	Electronic
Governing Class	G2
Electrical system	
Starting system voltage	24 V DC
Recommended battery capacity (Ah)	220
Cooling system	
Total coolant capacity (L)	225
Recommended coolant specification	50:50 Ethylene glycol premix
Dimensions and weight (Power Pack)	
Length (mm)	3182
Width (mm)	1992
Height (mm)	2160
Weight (kg)	3620

Power rating definition and special notes :

- Prime Power (PRP): Applicable for supplying power for varying electrical load for unlimited hours. Prime Power (PRP) is in accordance with ISO 8528
- Fuel consumption data is based on diesel with specific gravity of 0.85 and conforming to IS: 1460. Fuel consumption tolerance is +5%
- Conformance Standards: IS/IEC 60034-1, IS 1460, ISO 8528, ISO 3046, IS 13018, ISO 9001

Specification are subject to change due to continuous improvement and are for reference only.

SHIG INDIA
Engineering your power

Shandong Heavy Industry India Pvt Ltd

Survey No.280,281 Village Maan, Taluka Mulshi, Hinjewadi Phase II,
Pune - 411057
Phone: +91 020 67921100 Website: www.shigindia.com
E -mail: info@shigindia.com

Toll Free No.
1800 266 2338

follow us on  

DURABLE - ROBUST - BUILD TO LAST

 **MOTEURS**
Baudouin