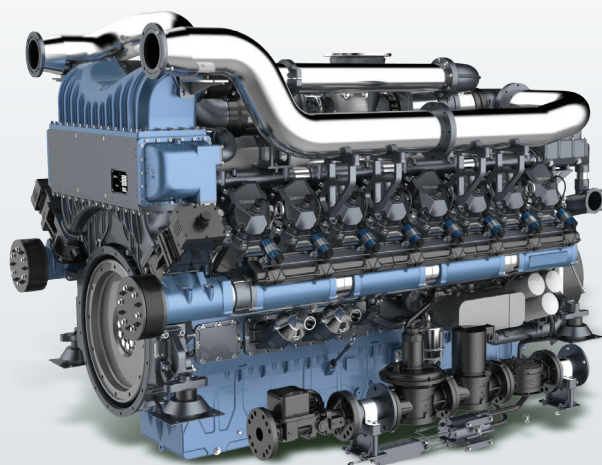


Gas Engine for Gensets

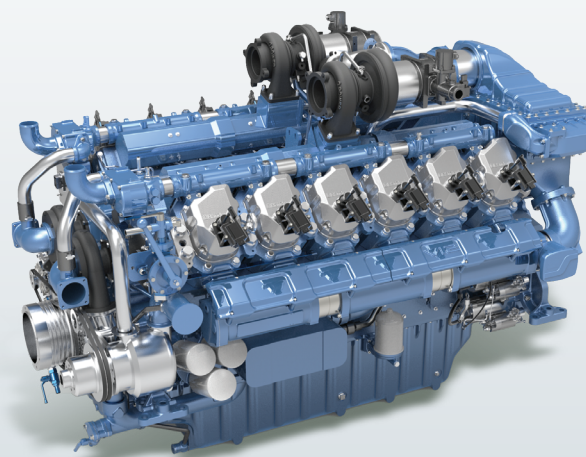
Range 1010 – 1750 kVA.



As emissions standards become more stringent, power solutions must comply with these demands, while meeting ever increasing power requirements.

Gas generators have emerged as an efficient solution thanks to their environmental and economic benefits. Gas offers a cost effective fuel option compared to other sources.

Baudouin's focus on engine performance, fuel consumption and serviceability ensures a competitive total cost of ownership. Baudouin Gas engines are ideal for co-/tri-generation applications using heat recovery capabilities, which is economically beneficial



for large greenhouses, hospitals and manufacturing facilities.

Gas installations are preferred by energy users such as supermarkets and industrial plants located in urban areas, allowing direct connection to the gas network, therefore avoiding the costs and risks associated with onsite fuel storage.

Baudouin gas engines offer the perfect complement to renewable energy generation, as their operating flexibility and high efficiency can offset the intermittency of these power generation sources.

Baudouin India's diesel & gas engines are backed by European technology with legacy of over 100 years in engineering and innovation. Known for designing and manufacturing the highest quality of diesel engines for marine, power generation and host of other applications, Baudouin now brings the same reliability and futuristic European technology to the Indian market.



Casis, France - Since 1918



Pune, India

Manufactured in smart manufacturing facility in Pune, India, the engines are suitable for Indian working conditions. Engines are available in range of 1010 – 1750 kVA.

CUSTOMER BENEFITS

- Spark ignited gas engine
- Clean & Efficient
- Optimised for :
a. Power Generation
b. Combined cycle
- Ease of maintenance
with service friendly design

GAS ENGINE BASIC DATA

Engine model	12M33G10N0/5	16M33G6N0/5	12M55G6N0/5
Suitable kVA rating - COP	-	1375	1750
Gross Engine Output -kWm	-	1280	1588
Suitable kVA rating - PRP	1010	-	-
Gross Engine Output -kWm-PRP	900	-	-
Speed (RPM)	1500	1500	1500
Bore x stroke (mm)	150 X 185	150 X 185	180 X 215
Displacement (L)	39.2	52.3	65.6
No. of cylinders	12 - V	16 - V	12 - V
Aspiration	Turbocharged and air to water cooled		
Compression ratio	11:1	12.5:1	12:1
Lubrication system			
Total lube oil capacity (L)	150	175	410
Fuel system	Open Chamber/Lean Burner		
Injection pump type	ECU	ECU	ECU
Electrical system			
Starting system voltage	24V DC	24V DC	24V DC
Dimensions and weight (WITHOUT RADIATOR)			
Length (mm)	2164	2781	3254
Width (mm)	1497	1564	1794
Height (mm)	1710	1881	2799
Weight (kg)	3390	5300	9600

*Specifications are subject to change due to continuous improvement and are for reference only.

*Engine power confirmation is based on the Gas composition. Please consult Baudouin India subject matter expert.

Rating definitions:

All ratings are based on operating conditions under ISO 8528-1, ISO 3046, and DIN6271. Performance tolerance of +_ 5%.

Test conditions 100 kPa, 25 degC air inlet temperature, and relative humidity of 30%. Derating may be required for conditions outside these. Please contact the factory for details.



Survey No. 280.281, Village - Maan, Hinjawadi Phase - 2,
Taluka - Mulshi, Pune, Maharashtra, India - 411057

Tel: +91 20 6792 1100

Email: info@baudouinindia.com

Follow us on



Contact:

South : Mr. Suresh Iyer +91 89564 83644

West : Mr. Darshan Anjariya +91 89564 83646

North & East : Mr. Vinod Singh +91 89564 83642

www.baudouinindia.com